



The Dementia Services
Development Centre



UNIVERSITY OF
STIRLING



DWA ARCHITECTS



DWA ARCHITECTS

CARING FOR OLDER PEOPLE

INTERNATIONAL STUDENT DESIGN COMPETITION

**COMPETITION BRIEF
2009**

COMPETITION ORGANISERS

DWA Architects
RIBA Competitions Office

COMPETITION SPONSORS

DWA Architects
BUPA Care Services

COMPETITION JUDGES

Dementia Services Development Centre, Stirling University; Professor June Andrews
Alzheimer's Society; Neil Hunt, Chief Executive
BUPA Care Services; Lyth Watson, Director of Business Development
DWA Architects; David Ward, Chief Executive

Introduction

As people grow old they become less independent due to physical, physiological and mental changes which create disabilities. There is of course no set sequence or programme for this, but as life expectancy increases, dependency of older people on others increases.

Most of us would wish to spend our old age in familiar surroundings and therefore remain living in our own home, but dependency levels will, possibly at some stage, render this impractical.

For some time, therefore, residential homes have expected to provide accommodation for older people who cannot manage at home or with family or friends, and now, due to the general restructuring of the NHS, private care homes provide residential accommodation but also much more care and support for the more frail and disabled.

Therefore, whereas the residential home could be formed from a conversion and adaptation of a large house, the design of the modern care home has become far more sophisticated and is nowadays most commonly purpose built.

As disabilities affecting older people become individually recognized and the symptoms and the causes slowly understood, the design preferences and requirements to assist with care, mobility and their effects eventually become formulated.

However, the evolution of the design of the modern care home is so often largely led by the experiences of friends, family, medical staff and carers, trying new ideas and assessing what works best to give older people comfort and safety, as well as, as much involvement and control of their everyday affairs. Design features, whether large or small, so often therefore start off as ideas which are then developed, abandoned or changed and often these features lead to the development of others.

Objectives

The objective of this competition is therefore to seek ideas from you as to how you think the care home of the future may look. There are no restrictions, for instance, your submission may consider the larger design issues or maybe the smaller ones, or all of them. It is impossible to rate their individual importance as success is achieved in how they are integrated together.

In the initial briefing document, we raised some relevant issues and here we will pose some others, but these are intended to stimulate your imagine, not to represent a questionnaire. We all have some level of interaction with older people and together with our own likes and dislikes can therefore begin to imagine how design could benefit them, given their various stages of physical, physiological and mental decline.

There are, of course, also many references available to you but how far you involve yourself with this is for you to decide.

Some useful references, given at the end of this section, may be those of the organizers, sponsors and judges and these may link you to others, but there are many others for you to consider.

We are not looking for you to comply with any of the current legislation, or even recommendations that exist today, but your ideas must be considered appropriate in the opinion of the judges.

In order to further stimulate you, we would like to put some other issues to you, for instance, will our current culture of how we care for our older people still be the same or radically different? Should the care home be more integrated into the local community, if so, what elements and how? Could this change the design or maybe its location? Are adjoining uses important? Should background noise levels be taken into account in choosing suitable locations? In order to be economic, staffing levels have to be efficiently managed, but what level of accommodation and layout would be best for the benefit of the resident? Will the desire for energy conservation change the building fabric and is the visual appearance of the home, both externally and internally an important issue for the residents?

Unfortunately we generally do not visit our older people as often as we should, but can this be improved by location selection or building design? We continue to struggle with the dilemma of how to make a care home a real 'home' for the residents. Current thinking goes towards replicating some of the features that we all associate with home, but is this the right approach and is it currently being implemented well? Most modern care homes include some areas for 'activities' which is obviously seen to be a good thing, but what activities, exercise and access do older people need and what can they actually participate in, bearing in mind their disabilities and dependency?

You should now understand why we are all intrigued to see what ideas you can come up with and why we have not made the competition site specific as we would like to receive your ideas on this also.

We hope that you will ask yourselves many more questions than those we have posed in order to stimulate you, and if you would like to put any to us then please do so, but within the allocated part of the timetable.

Finally and fundamentally, we hope that you will enjoy this competition and we look forward to receiving your entries.

Website links:

www.dementia.stir.ac.uk

www.alzheimers.org.uk

www.bupacarehomes.co.uk

www.dwa-architects.co.uk

How to Register and Enter the Competition

To register, please download and complete the registration form and return to the RIBA Competitions Office to receive your unique entry number. This number should then be printed clearly on your submission boards and accompanying A4 design statement.

Please note that the deadline for registration is Monday 2 March 2009.

Questions

Any questions which competitors wish to ask should be submitted in writing or via email to the RIBA Competitions Office, to arrive before 4.00 pm on Wednesday 28 January 2009. A memorandum based on the questions received will be available to download from the RIBA Competitions Office website from Wednesday 4 February 2009. The memorandum will form part of the conditions.

Timetable

The competition programme, which may be subject to variation, is as follows:

Competition launch	-	Tuesday 6 January 2009
Deadline for questions	-	Wednesday 28 January 2009
Response to questions	-	Wednesday 4 February 2009
Registration closes	-	Monday 2 March 2009
Submission of designs	-	2.00 pm Friday 6 March 2009
Judging	-	W/C 9 March 2009
Announcement of winning entries	-	Monday 16 March 2009
Awards Ceremony	-	Thursday 26 March 2009

Eligibility

The competition is open to all Architectural students worldwide.

No member or employee of the organizers, sponsors or the judges, nor any partner, associate or employee of them shall be eligible to compete or assist a competitor.

Intention to Build

The competition is a call for ideas only; it is not the intent of the organizer or sponsors to build the winning design.

Anonymity

All entries will be judged anonymously. Any entry that has identifying marks that could be used to identify the submission's designer will be automatically disqualified.

A successful competitor must be able to satisfy the judges that he/she is the bona fide author of the design that he/she has submitted.

The organizers will exercise all reasonable care, but will not be responsible for the loss or damage to drawings. Competitors are advised to retain copies of all material submitted.

Disqualification

A design shall be excluded from the competition:

- If received after the time stated in the competition conditions
- If in the opinion of the judges, it does not substantially meet the requirements of the brief
- If the competitor discloses his or her identity, or otherwise improperly attempts to influence the judges
- If any of the requirements of the competition conditions and brief are disregarded

Copyright

The ownership of the copyright in the work of all competitors will be in accordance with the Copyright and Patent Act 1988.

Submission

Competitors should submit their design proposals on two lightweight A1 foam boards.

Models, or electronic material must not be submitted, but these may be represented as part of the submission on the two permitted A1 boards.

A design statement should form part of the submission up to a maximum of 10 x A4 sides.

The submission of each competitor should be contained in a single package and is to be sent, carriage paid, addressed to the RIBA Competitions Office, 6 Melbourne Street, Leeds LS2 7PS, clearly marked 'DWA Architects Student Design Competition' to arrive no later than 2.00 pm on Friday 6 March 2009.

Judging

The judging of the competition entries will be undertaken by:

Professor June Andrews	-	Dementia Services Development Centre, Stirling
Neil Hunt	-	Chief Executive, Alzheimer's Society
Lyth Watson	-	Director of Business Development, BUPA Care Homes
David Ward	-	Chief Executive, DWA Architects (RIBA Architectural Advisor)
Joanne Wallis	-	RIBA Competitions Office (Observer)

Prizes

Winning designs will receive awards of:

First Prize:	£3,000
Second Prize:	£1,500
Third Prize	£1,000

Announcement of Awards

At the conclusion of the competition, the RIBA will publish the winning names after communicating it individually to each of the competitors. All the designs will be retained for a further period by the organizers for the purposes of awards ceremony, exhibitions, publicity and illustration, without payment of any fee, but subject to copyright provisions.

Awards Ceremony

An Awards Ceremony will be held at the RIBA HQ, 66 Portland Place, London on Thursday 26 March 2009.

Exhibitions

The winning entries plus runners up (at the discretion of the judges) will be exhibited, following the Awards Ceremony at the RIBA, London from Friday 27 March 2009.

Competition Management

The competition is being administered by the RIBA Competitions Office, 6 Melbourne Street, Leeds, LS2 7PS. Telephone: 0113 234 1335. Fax: 0113 246 0744, or email riba.competitions@inst.riba.org to whom all enquiries relating to the general conditions of this competition should be addressed.



- [DWA Home >](#)
 - [DWA Services >](#)
 - [DWA Commercial >](#)
 - [DWA Community & Leisure >](#)
 - [DWA Healthcare >](#)
 - [DWA Interior Design >](#)
 - [DWA Residential >](#)
-
- [DWA Awards >](#)
 - [DWA News >](#)
 - [DWA Client Testimonials >](#)
-
- [DWA People >](#)
 - [DWA Careers >](#)
 - [DWA Contacts >](#)
 - [DWA Links >](#)
 - [DWA Feedback >](#)

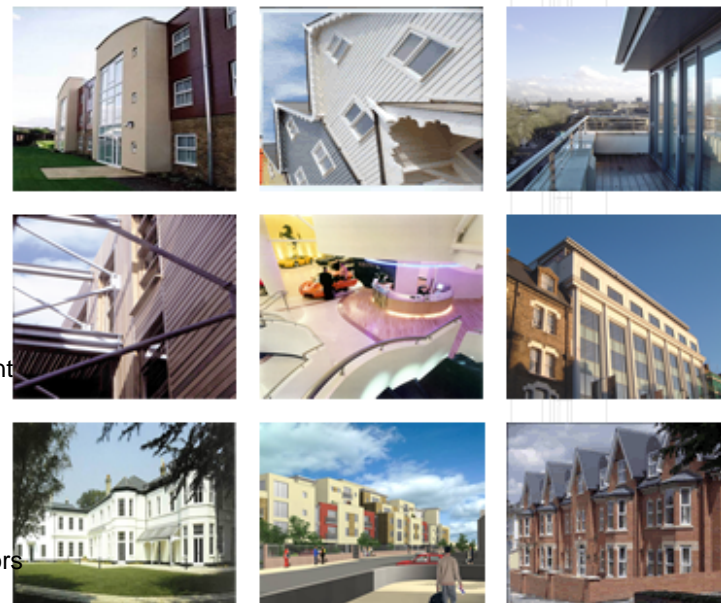
DWA Architects was formed in 1988 and over this time has gained an international reputation for original, creative design and professionalism.

We provide a service that is comprehensive and competitive. To ensure that the direct control and co-ordination of the design stage can continue through, from the construction process to completion, we have integrated complementary disciplines into the practice.

Our policy of engaging talented young designers and maintaining a vibrant creative dynamic within the design studio, teamed with our senior practitioners, with their wealth of design detail and expertise, has created a winning combination.

We are proud to be one of the few architectural practices to attain Investors In People recognition and have recently achieved ISO 9001 2000 Quality Management procedures and systems certification.

[Click here to view the comprehensive list of services we offer](#)



© 2009 DWA Architects Ltd.

DWA ARCHITECTS



20 YEARS ANNIVERSARY 1988 - 2008