

Social Research Centre

School of Business & Social Sciences

Roehampton University

Independence and Interdependence: Social Inclusion and Working Together: The Role of WestFocus

Stephen Driver

Robert Busfield

Roehampton University



WestFocus

Realising Potential Through Collaboration

WestFocus

Social Inclusion Network

- WestFocus Knowledge and Business Development Networks (KBDNs)
- Partner universities working together to support organisations combat social exclusion
- Sharing knowledge and expertise
- Training, consultancy and evaluation
- Managerial and professional development
- Entrepreneurship and social enterprise
- Multi-agency partnership working

Merton Intelligent Monitoring System

<http://www.merton.gov.uk/mims>

Background

- Funded by Office of the Deputy Prime Minister under the e-Innovations initiative
- Part of Merton Council's review of services to older people
- Project start date July 2004
- Ends September 2005

MIMS Partners

- Office of the Deputy Prime Minister (ODPM)
- London Borough of Merton
- Mascot Careline Service (LBM)
- Liverpool University – Centre for Intelligent Monitoring
- Roehampton University – monitoring/evaluation
- Voluntary Sector:
 - Technology for Need (TfN)
 - Merton Association of Pensioners (MAP)

Technology

- Chromatic technology
- Adaptation of industrial technology
- Surveillance of personal and environmental situation; e.g. movement, heat and other household devices (e.g. television)
- Intelligent monitoring: tailored to environment and individuals

MIMS AIMS

- Test technology in ‘real world’ environment
- Improve early warning support for older people and frail
- To assist NHS Primary Care Trusts in earlier discharge of patients
- Enabling older people to live independently

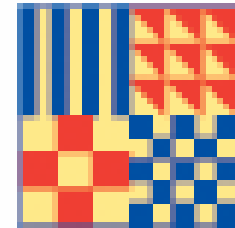
Progress

- Laboratory demonstration of technology
- Demo room set up in sheltered housing unit
- Volunteers recruited
- Infrastructure being installed

Issues

- Surveillance
- Privacy
- Working practices of monitoring staff
- Suitability of technology for other contexts (can the technology be ‘translated’ to other situations)
- Implications of technology for relevant groups; e.g. residents, caring services.

Roehampton University



WestFocus

Realising Potential Through Collaboration

Meanings attached to technology by relevant social groups

