



Buro Happold **Specialist Consulting**

**Buildings for Everyone**

Iain McKinnon, Access Consultant

## Buro Happold Inclusive Design

- What is inclusive design?
- Why do we need inclusive design?
- About us and what we do
- Our recent projects
- Our work with others
- BHID and you



## BHID – what is inclusive design?

**Inclusive** – everyone can use places safely, easily and with dignity

**Responsive** – takes account of what people say they need/want

**Flexible** – different people can use places in different ways

**Convenient** – everyone can use places without too much effort or separation

**Accommodating** – for all people, regardless of their age, gender, mobility, ethnicity or circumstances

**Welcoming** – no disabling barriers that might exclude some people

**Realistic** – offering more than one solution to help balance everyone's needs and recognising that one solution may not work for all.



## BHID – what is inclusive design?

Inclusive design relates as much to the design process as to the final product and just as equally to management, operation, and information - bonding user experience with professional expertise.

Just meeting the building regulations is not considered inclusive.



## BHID – what is inclusive design?

An inclusive environment does not attempt to meet every single need, but considers people's diversity.

Inclusive environments can break down barriers and exclusion and will often achieve superior solutions that benefit everyone.



## BHID – why do we need inclusive design?

- Legacy
- Law
- Policy
- Economics
- Expectations
- Tomorrow
- ...because its fair



## BHID - about us

Buro Happold Inclusive Design (BHID) offer a personal and bespoke access consultancy service to our clients.

We offer advice at all stages of design, it is most cost effective to have our input in the earliest stages of the project to create the most pleasing and economically sound designs possible.

We work toward good practice and not minimum standards to create the most inclusive environment possible. We recognise that good design is about marrying usability with aesthetics and service aims.

It is this ethos that has made us leading access consultants.



## BHID - what do we do?

- Design team membership
- Design appraisals
- Access statements
- Design standards
- Access audits
- Policy and strategy
- Research
- Inclusive product design development
- Training
- Consultation



## Recent Projects

- **Transport** - Glasgow Airport Rail Link, BAA Walkway, Glasgow Airport, BAA Skyhub, Glasgow Airport
- **Historic** - Historic Scotland, National Trust for Scotland, National Disability Authority research
- **Public** - Scottish Parliament Building, Madrid Law Courts, Wexford County Council Offices, Custom House, Dublin
- **Education** - Hazelwood SEN School, John Wheatley College, Liverpool John Moore University, Leicester City Academy
- **Masterplanning** - Crystal Palace Park. London 2012 Olympic Park Masterplan, Brent Cross and Cricklewood
- **Public Realm** - Wembley Infrastructure, Hanging Gardens, Mayor Square Dublin, North Quay Access Statement
- **Retail** - Fortnum and Mason, Arsenal Megastore, House of Fraser, Manchester, St Johns Shopping Centre, Liverpool

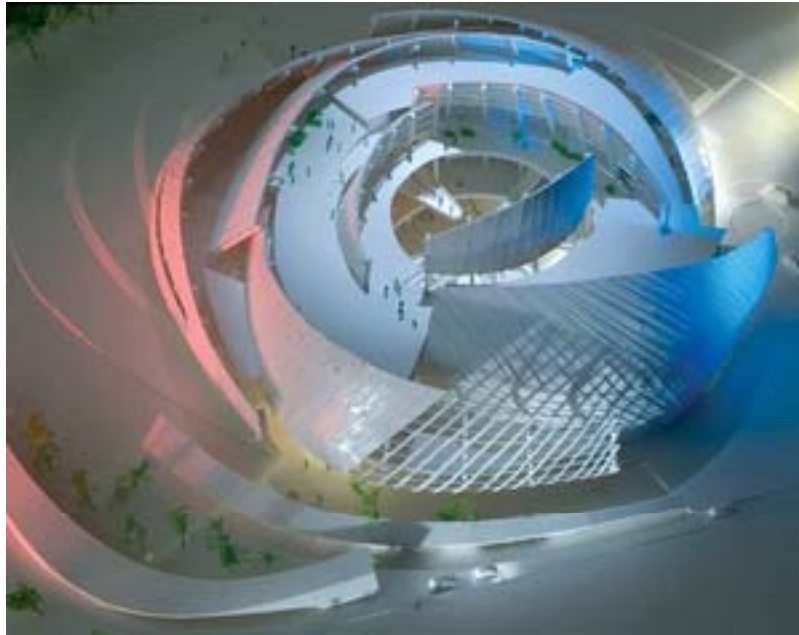


## Recent Projects

- **Hotels** - Bermondsey Square Hotel, London, Cumberland Hotel, London, Justice Mill Lane, Aberdeen, Missoni Hotel, Glasgow
- **Sports and Arenas** - National Indoor Sports Arena and Velodrome, Emirates Stadium, Arsenal, Tynecastle, Everton Stadium
- **Health** - National Rehabilitation Hospital, National Patient Safety Agency, St Barts, Beatson Oncology
- **Museums and Galleries** - Grand Museum of Egypt, Cairo, Leeds City Museum, New Liverpool Museum, Liverpool, Massar Children's Discovery Centre, Damascus
- **Offices** - 20 Fenchurch Street, More London Estate, Puddle Dock, Ofcom Riverside House, KPMG HQ Salisbury Sq
- **Theatres**- Unicorn Children's Theatre, The Northern Ballet Theatre, Leicester Performing Arts Centre, Greenock Arts Guild Theatre



## Recent Projects



- *Massar Children's Discovery Centre, Damascus, Syria*



- *National Indoor Sports Arena and Velodrome, Glasgow*



## Recent Projects



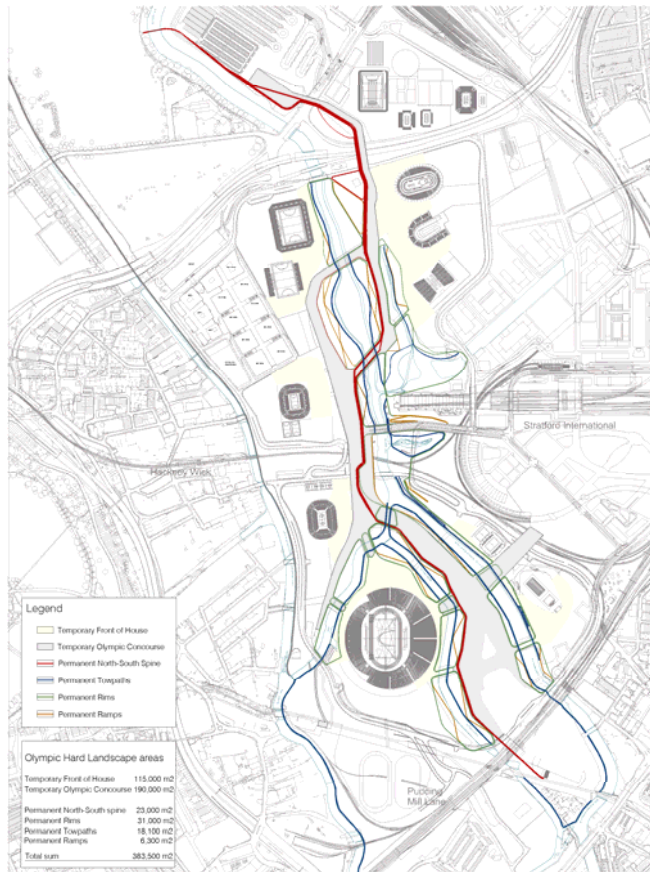
- *St Barts Hospital, London*



- *Hazelwood School, Glasgow*



# Recent Projects - The 2012 Olympics



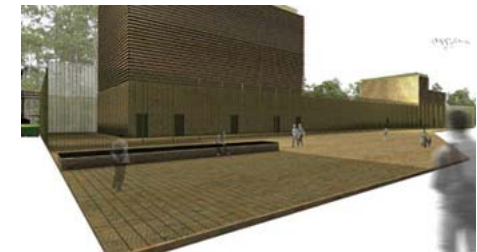
Olympic Park And Site Wide Infrastructure

London 2012

ODA Inclusive Design Standards

December 2007

Available in alternative formats on request

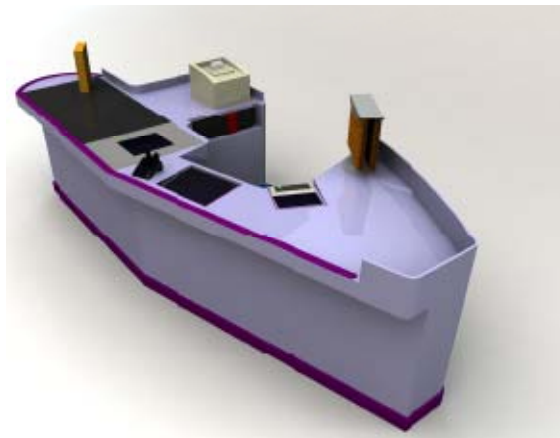


# Recent Projects



# Collaborative Working

- Developed refuge communicator with Baldwin Boxall
- Product Development Partnership (PDP) with students from the University of Strathclyde
- Began in 2005 and currently working with the fourth group of students



- *Above: Refuge Communicator*
- *Left: Previous PDP projects*



BHID and you

Questions?

**Iain McKinnon** MEng IEC NRAC Consultant

Access Consultant

[iain.mckinnon@burohappold.com](mailto:iain.mckinnon@burohappold.com)

Buro Happold the engineering of excellence

