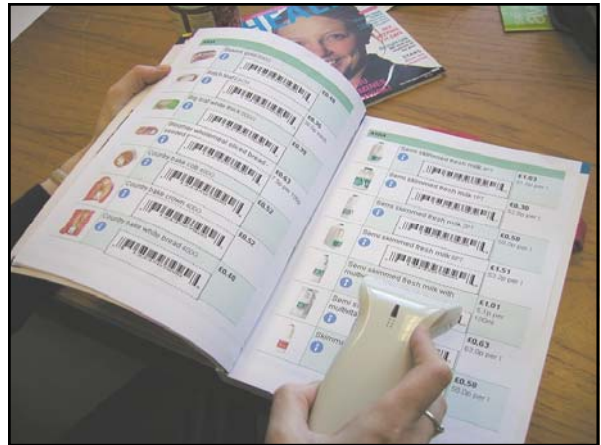


# The Companion Teleshopping & Beyond

## What is the difference between a stair lift and a Telecare System?

The first requires an installer and a maintenance engineer, it behaves like a specialised domestic appliance

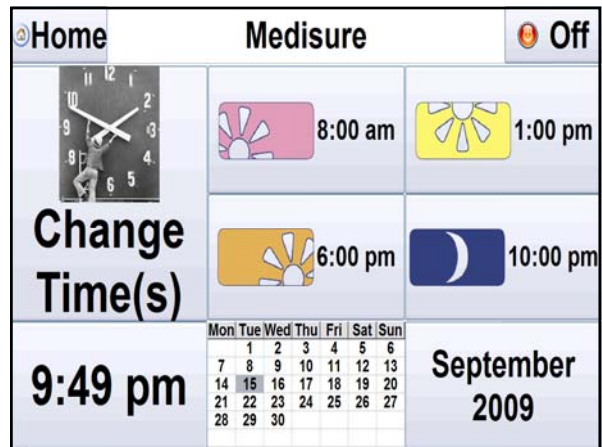
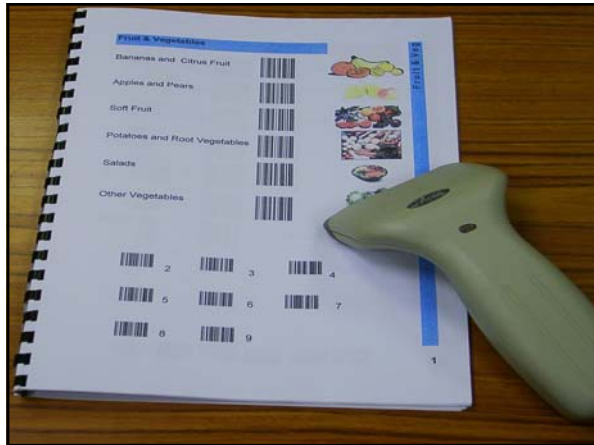
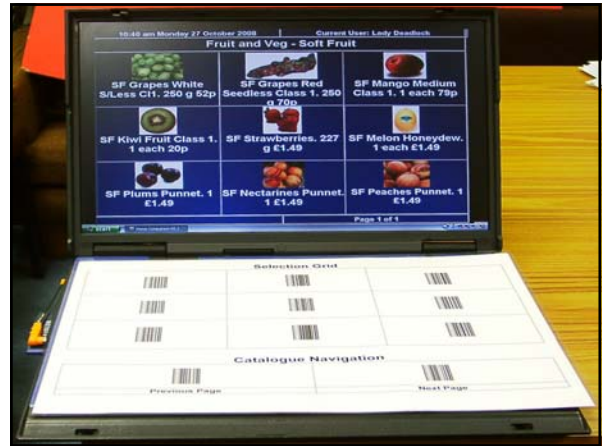
The second needs close cooperation between a number of public and commercial bodies, which all accept the overall concept.



## One swallow does not make a treatment

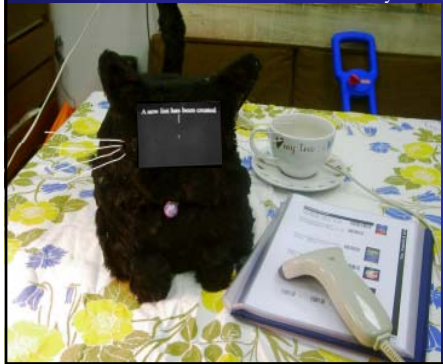


Estimates to the extent of non-compliance vary, ranging from 40-75% in the elderly



**The Platform and Added Value Concept**

Once there is a powerful computer in the home, a number of services and **Telecare** can be added at relatively small cost.



- Shopping
- Staff Tracking
- Medicine Support
- Health Reporting
- Home Monitoring
- Entry Control