

# Visualising Home

Housing for older people Computer-based design

Construction quality

Communication

## Knowledge management and housing adaptations

Phil Astley, Andy Atkinson & Catharina Nord

London South Bank University • Faculty Engineering, Science and the Built Environment

### The Investigation

#### Objectives

The project is a feasibility study into whether information and visualisation technology might be appropriate in improving the design and implementation of adaptations of housing of older owner occupiers. The aim is to investigate how to support communication between the builder and the house owner providing relevant knowledge with a relevant type of computer-based tool.

#### Plan

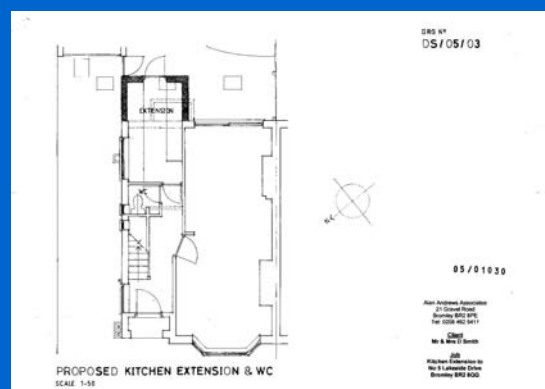
The study is of explorative nature and case study methodology is applied. A number of cases, i.e. housing adaptation projects, will be investigated in terms of factors contributing to success or failure, defined as user satisfaction. Open-ended interviews and observations are expected to reveal experiences of house owner, builder and other involved agents, such as community occupational therapist, building control official and designer/architect.

### Potential Benefits

#### For older people and the society

The provision of good housing for the aging population is a challenge of great magnitude. Older people will remain in their homes to a larger extent than they used to and the importance of institutional living has declined. Good quality architecture is a highly relevant means to facilitate independent living for older people at home.

Housing adaptations, extensions and alterations are done in order to remove spatial flaws, with or without the support of Disabled Facilities Grants. The Government has highlighted that the quality of construction work is not always satisfactory. A hypothesis for this study is that lack of knowledge and lack of access to knowledge is a factor decreasing quality of construction work in the private housing adaptations for older people due to the complexity of the issue.



### Collaborators and Partners

FMB Federation of Master Builders  
HoDis National Disabled Persons Housing Service  
Allied Health Professions, London South Bank University

### References

- Heywood F, Oldman C & Means R (2002) *Housing and Home in Later Life*. Open University Press. Buckingham: UK.
- HoDis (2001) *Needs First*. London: HoDis.
- HMSO (1999) *Combating Cowboy Builders*. Final Report of the Cowboy Builders Working Group. HMSO London.
- Rampley, M ed. (2004) *Exploring Visual Culture: definitions, concepts, contexts*. Edinburgh: Edinburgh University press.



#### Contact Details

*Principal Investigator*  
Phil Astley, Senior Research Fellow  
[astley.phil@lsbu.ac.uk](mailto:astley.phil@lsbu.ac.uk)

*Researcher*  
Dr. Catharina Nord, Senior Research Fellow  
[nordc@lsbu.ac.uk](mailto:nordc@lsbu.ac.uk)



London South Bank University,  
Faculty Engineering, Science and the Built Environment  
103 Borough Road,  
London SE1 0AA  
Tel: 0207 815 8332